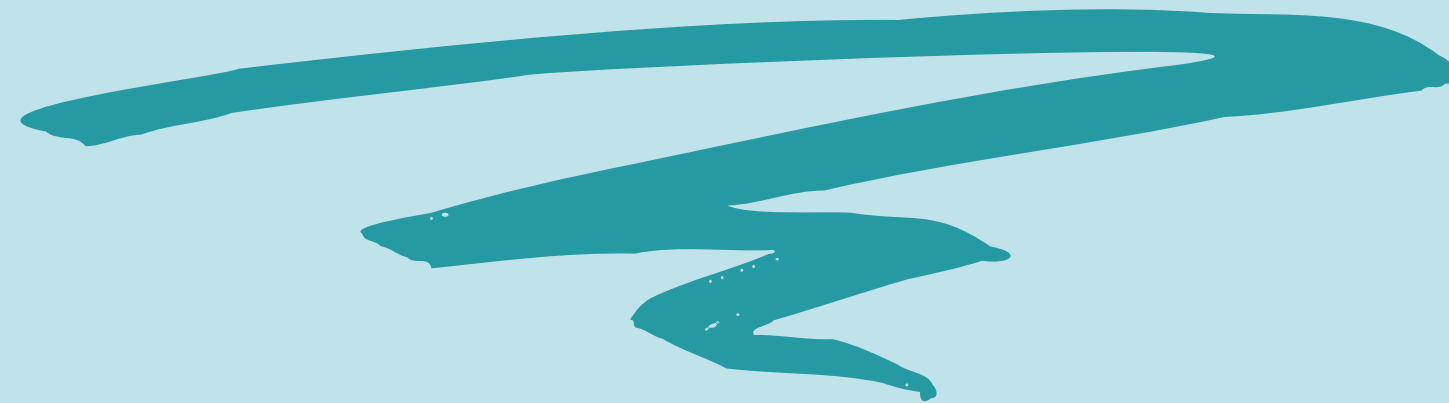




KNOW YOURSELF

MY UNIQUE SELF



INTRODUCTION

Today, we will

- * make connections to what uniqueness means
- * watch and discuss short videos and quotes around “being yourself”



SEL CONNECTION



Today, we will practice highlighting our uniqueness by increasing our **self-awareness**.





ICEBREAKER

CONNECTION CIRCLE



CONNECTION CIRCLE



YOUR WEIRDNESS IS WHAT MAKES YOU SPECIAL, EMBRACE IT."

- TYLER THE CREATOR

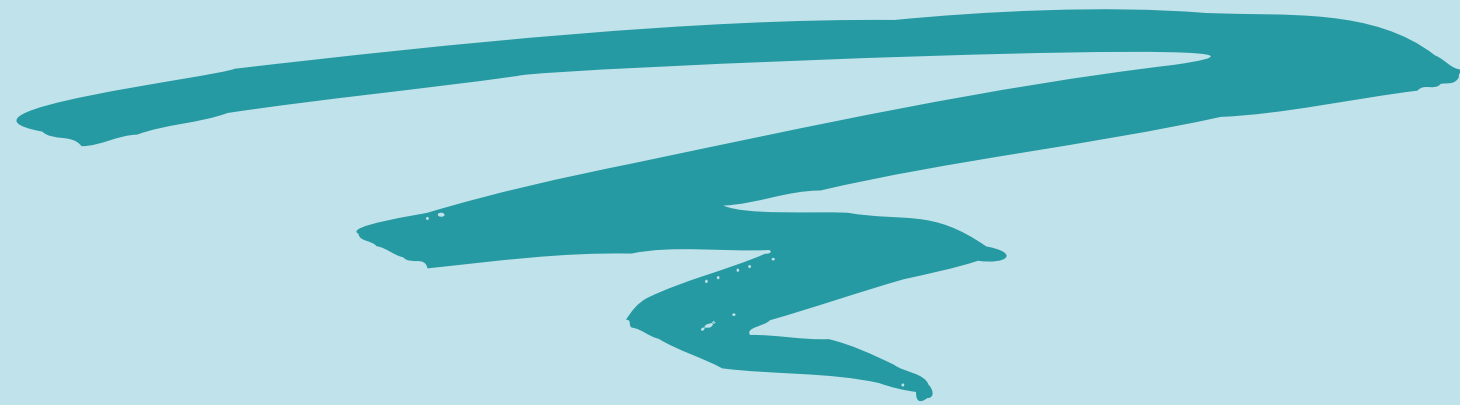
- 1) Write your connections to the quote above on a post-it note.
- 2) Add your post-it note to the chart paper.
- 3) Take a post-it note your classmate wrote that you connect to
- 4) Class Connection Circle





**LESSON
PART ONE**

MY UNIQUE SELF



LESSON: PART ONE



MY UNIQUE SELF



"Polo G - Be Yourself"



"Nipsey Hussle - Be Yourself"



MY UNIQUE SELF

Use the graphic organizer to reflect on the video and think about your unique self.

Once done, we will share out our responses as a class.

